

A PART OF S.E. 1/4 OF SEC. 16, T.5N., R.2W., S.L.B.&M.  
**LAKEVIEW EQUESTRIAN PARK NO.2**

193

LOTS 6 TO 9 & 27 TO 36

WEBER COUNTY

SCALE 1" = 60'

TAXING UNIT: ,98

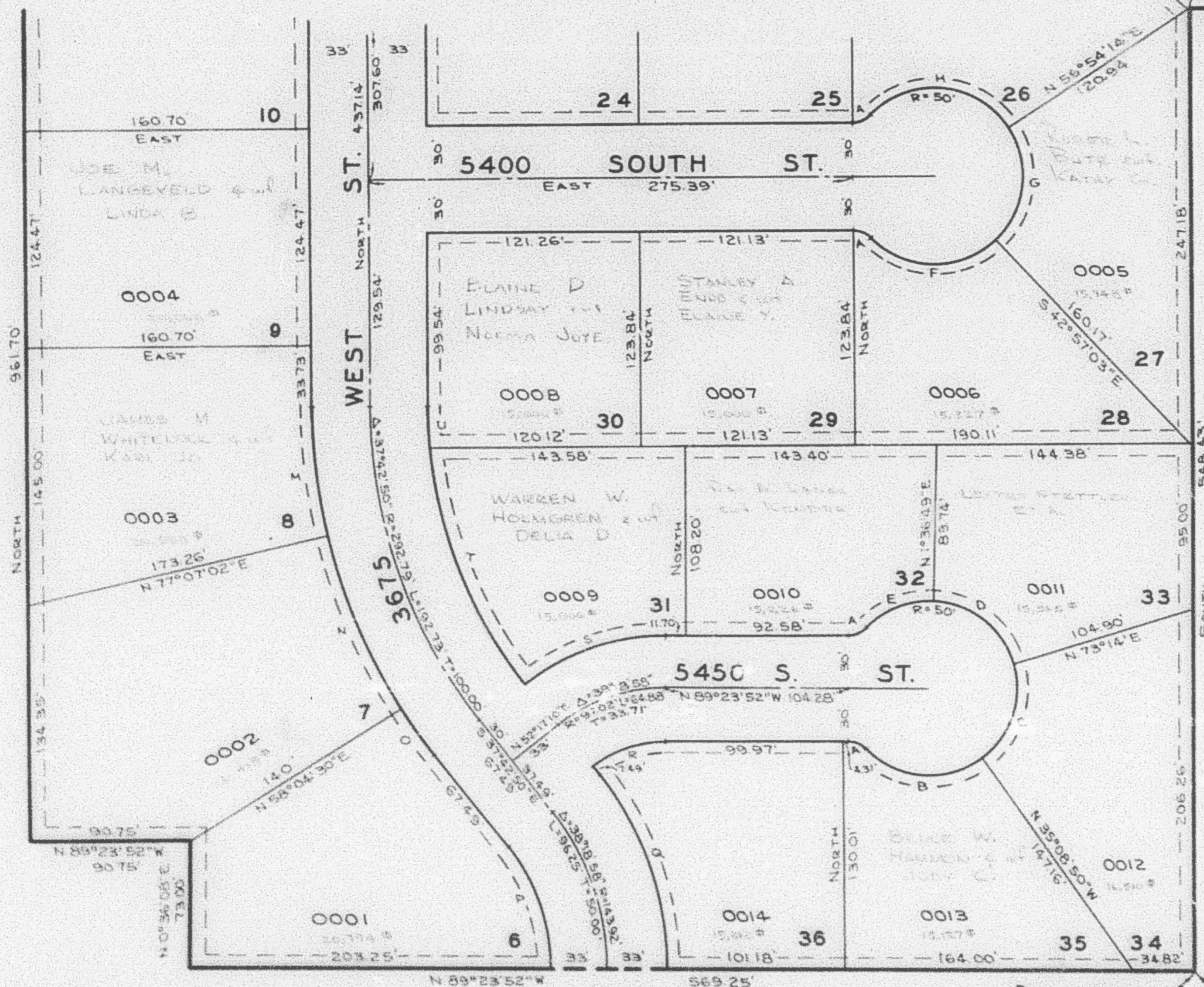
PREFIX: 09-193

EXCEPT WHERE OTHERWISE SHOWN  
 ALL LOTS ARE OWNED BY  
 COCKMAN MANAGEMENT, INC.  
 DEKA INVESTMENTS, INC.

SEE P. 194

SEE P. 73

SEE P. 73-1



NOTE SEE ORIGINAL PLAT IN BOOK 20, PAGE 77 FOR COMPLETE ENGINEERING DATA.

NOTE 7' UTILITY & DRAINAGE EASEMENT EACH SIDE OF PROPERTY LINE AS INDICATED BY DASHED LINES.

N 0°10'E 792.83', N 89°23'52\"/>

SEE P. 73-1

PROPERTY LINE CURVE DATA

	A	B	C	D	E	F	G	H	M	N	O	P	Q	R	S	T	U
Δ	46°11'33"	81°56'11"	71°37'10"	71°37'11"	47°11'54"	59°08'16"	80°08'43"	103°00'27"	12°52'58"	19°02'32"	5°47'20"	38°18'58"	38°18'58"	38°18'58"	38°18'58"	32°20'53"	5°21'57"
Δ	18.00'	50.00'	50.00'	50.00'	50.00'	50.00'	50.00'	50.00'	325.79'	325.79'	325.79'	110.92'	176.92'	67.02'	127.02'	259.79'	259.79'
L	2.89'	7.50'	62.50'	62.50'	41.19'	77.79'	69.94'	88.96'	73.25'	108.28'	32.92'	74.18'	118.31'	44.82'	84.94'	146.67'	24.33'